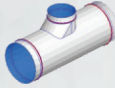


### Technical Details

Power	: 12 KW
Voltage-Frequency	: 380/400VAC 50-60Hz 3PH+N+PE
Current	: 18A
Air Need	: 189 lt/min
Air Pressure	: 7 Bar
Net Working Area	: 3200mm x 1500mm
Maximum Working Speed	: 25 m/min (Idle Speed)
Cut Speed	: 1-12 m/min
Table Carrying Capacity	: 4,4m x 2,2m x 1,4m
Sheet Thickness (Optional)	: 0,50mm - 3,0mm Galvanized, Aluminium, Black DKP/HRP 0,50mm - 2,0mm Stainless Steel
Machine Weight	: 970 Kg
Motion Control System	: X and Y Axis Timing Belt, Z Axis Pneumatic
Motor	: 400 Watt Servo
Control System	: Pulser CNC Kontrol
Software	: Autodesk Fabrication Camduct (Latest Version) Licensed
Plasma Power Supply	: Hypertherm
Plasma Cutting Table	: DownDraft Table
Sensitivity	: +/- 0,50mm
Option 1	: 6000mm x 1500mm
Option 2	: Ultracut 100 HD



Round Offset



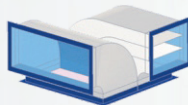
Shoe Tee Offset



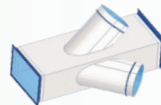
Trouser Piece



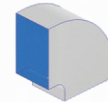
Oval to Square



Double Radius Bend



Straight With Oval Branches



Radius Bend

## PLASMA SHEET FEEDER

One of the primary challenges with plasma machines is the wastage of sheet metal, particularly in the last portion of the sheet, which often lies outside the cutting area and is discarded unused. To address this issue, our sheet feeding unit plays a crucial role by retrieving the sheet from the rolled stock, straightening it, and then delivering it to the plasma machine. This efficient process not only minimizes the waste of pre-cut sheet metal but also saves valuable time for the operator, who would otherwise be engaged in manually cutting with the plasma machine.

### Technical Details

Power	: 2,2 KW
Voltage-Frequency	: 380/400VAC 50-60Hz 3Ph+N+PE
Current	: 5,5A
Feeding Speed	: Average: 4 m/min
Sheet Thickness	: 0,50mm - 1,20mm
Machine Dimensions	: 1,22m x 2,18m x 1,2m
Machine Weight	: 880 Kg
Option	: 1 / 2 / 3 / 4 / 5 / 6 Feeder and Uncoiler

